



# Acuity System Quick Start Guide

Canela Software  
31805 Temecula Parkway  
Suite 791  
Temecula, CA 92592  
P 310-856-9926  
F 310-302-0146

Copyright © 2000-2009. All Rights Reserved.

No part of this publication or the enclosed software may be reproduced, transmitted, transcribed, stored in a retrieval system, or translated into any other language in whole or in part, in any form or by any means, whether it be electronic, mechanical, magnetic, optical, manual or otherwise, without prior written consent of CANELA Software™.

CANELA Software™ DISCLAIMS ALL WARRANTIES AS TO THIS SOFTWARE, WHETHER EXPRESSED OR IMPLIED, INCLUDING WITHOUT LIMITATION ANY IMPLIED WARRANTIES OF MERCHANTABILITY, FITNESS FOR A PARTICULAR PURPOSE, FUNCTIONALITY, DATA INTEGRITY OR PROTECTION.

CANELA Software™ and 20/20 Vision are registered trademarks of CANELA Software™.

This manual and 20/20 Vision software are copyrighted by CANELA Software™.

Trademarks of other companies mentioned in the documentation and/or software appear for identification purposes only and are the property of their respective companies.

# Table of Contents

## I. Getting Started

- 1. What is the Acuity System? . . . . . 3
- 2. System Requirements . . . . . 3

## II. Installation

- 1. Mac . . . . . 4
- 2. Windows . . . . . 4

## III. Initial Setup

- 1. Registering the Acuity System . . . . . 5
- 2. Calibrating the Acuity System . . . . . 6
- 3. Registering Additional Products . . . . . 7

# I. Getting Started

## 1. What is the Acuity System?

The Acuity System is a software program used worldwide by vision care professionals for vision testing, screening, and diagnosis. It replaces old-fashioned auto projector systems, and includes tests that traditionally have been sold separately. The accuracy and calibration of the software are even more precise than some printed charts, and can be used in research or in practice equally well.

## 2. System Requirements

### Minimum System Requirements

Mac:

- Operating system - Mac OS X 10.3.9
- Processor - 500 MHz G3
- Memory - 128 MB RAM
- Hard disk - 140 MB free disk space
- Display - 1024x768 resolution monitor

Windows:

- Operating system - Windows XP SP2 or Windows Vista
- Processor - 800 MHz Pentium or equivalent
- Memory - 128 MB RAM
- Hard disk - 140 MB free disk space
- Display - 1024x768 resolution monitor

### Recommended System Requirements

Mac:

- Operating system - Mac OS X 10.5 (or newer)
- Processor - 1.6 GHz Intel Core 2 Duo or faster
- Memory - 512 MB RAM or more
- Hard disk - 140 MB free disk space
- Display - 1280x1024 resolution monitor or larger
- Other - Internet connection *strongly* recommended

Windows:

- Operating system - Windows XP SP3 or Windows Vista SP1 (or newer)
- Processor - 1.6 GHz Intel Core 2 Duo or faster
- Memory - 512 MB RAM or more
- Hard disk - 140 MB free disk space
- Display - 1280x1024 resolution monitor or larger
- Other - Internet connection *strongly* recommended

# II. Installation

## 1. Mac Installation

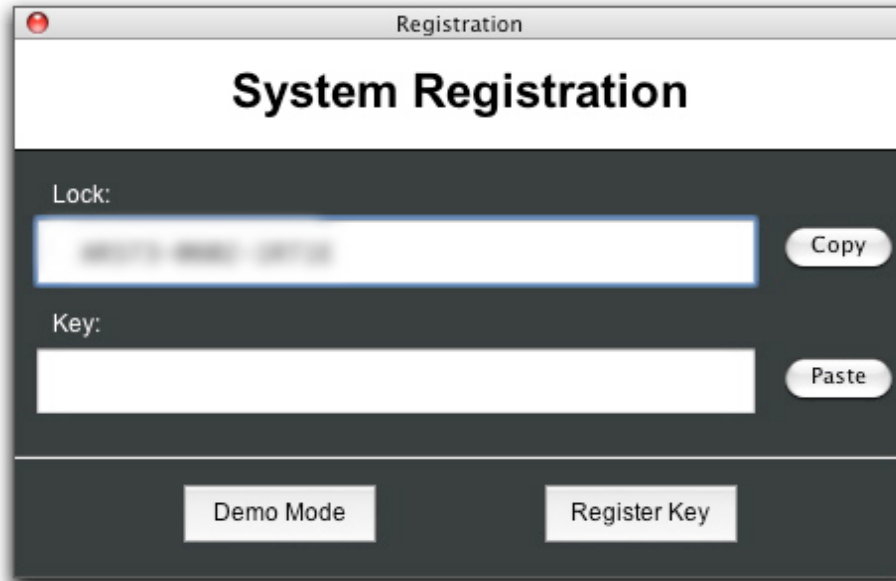
1. If your point of purchase provided you with a CD, copy the software file from the CD to your desired installation folder. If not, download the software file from the Internet, using the link provided by your point of purchase, then copy the software file from your download location to your desired installation directory.
2. Double-click the Acuity System application. The software will automatically install all necessary program files.
3. Proceed with registration and calibration. (See Section III, Initial Setup)
4. When the software finishes starting, it may prompt you to install remote control support. Please ensure that the infrared receiver is not connected, and then follow the prompts for the remote installation. When the installation is complete, close the installer but do NOT restart.
5. Open the Preferences window (by pressing F2 on your keyboard, or clicking “Preferences” on the control panel), and go to the “Remotes” section. Click on the picture of the remote that you are using, and then restart your computer.
6. Installation and setup is complete. Enjoy using your new Acuity System!

## 2. Windows Installation

1. If your point of purchase provided you with a CD, run the software installer found on the CD. If not, download the software installer from the Internet, using the link provided by your point of purchase, then run the software installer from your download location.
2. Follow the installation instructions. When installation has completed, double-click the Acuity System icon on the desktop.
3. Proceed with registration and calibration. (See Section III, Initial Setup)
4. When the software finishes starting, it may prompt you to install remote control support. Please ensure that the infrared receiver is not connected, and then follow the prompts for the remote installation. When the installation is complete, close the installer but do NOT restart.
5. Open the Preferences window (by pressing F2 on your keyboard, or clicking “Preferences” on the control panel), and go to the “Remotes” section. Click on the picture of the remote that you are using, and then restart your computer.
6. Installation and setup is complete. Enjoy using your new Acuity System!

# III. Initial Setup

## 1. Registering the Acuity System



### Manual

1. Provide your Lock code to your point of purchase.
2. Your point of purchase will give you the corresponding Key code that matches your Lock code. This may take up to a full business day to process.
3. Enter this code into the Key field, and click Register Key.
4. Done!

### Automatic (requires internet connection)

1. Hold down the Alt (or option) key on your keyboard.
2. While holding that key down, click on Register Key. You can then release the Alt/Option key.
3. You will be prompted for your password - this will have been provided to you by your point of purchase. Enter it and continue.
4. If you know your PO number, enter it now. If not, put "none".
5. Wait while your request is processed. If successful, your key will be automatically entered into the Key field. (If unsuccessful, return to step 1 and try again.)
6. Confirm that a key is in the Key field, and then click Register Key again.
7. Done!

## 2. Calibrating the Acuity System

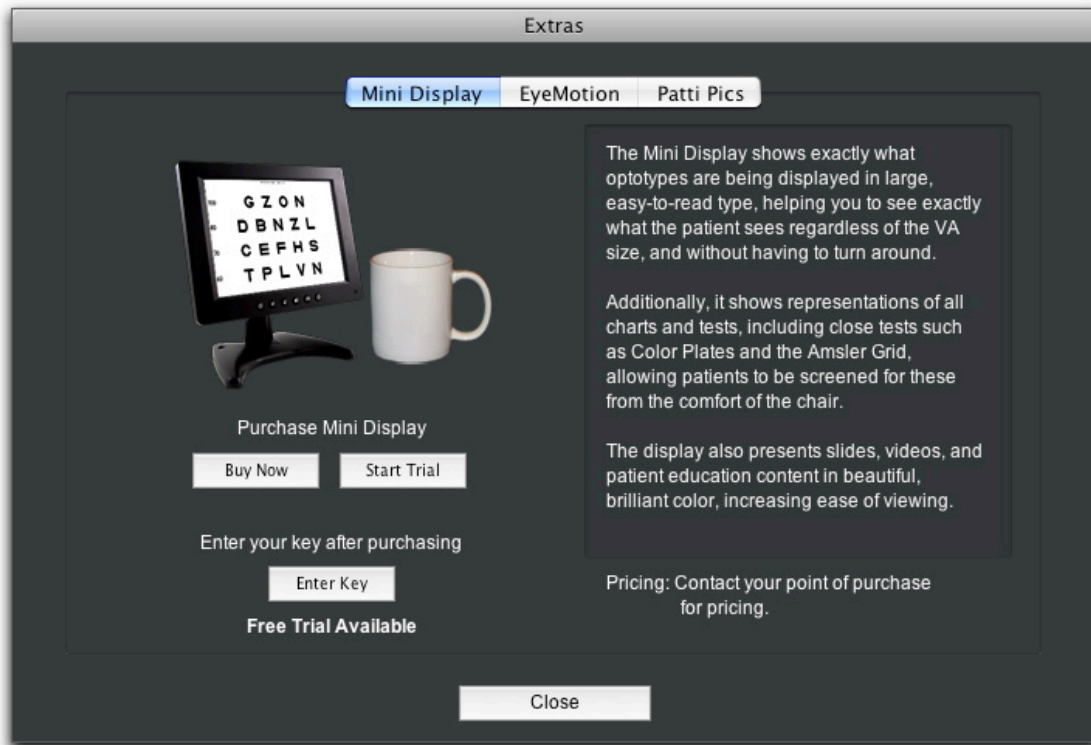
The screenshot displays a dark-themed interface titled "Calibration Controls". It is divided into two main sections: "Step #1" and "Step #2".

**Step #1:** This section contains two radio buttons for unit selection: "Feet" (which is selected) and "Meters". Below the buttons is a text prompt: "Please enter the distance in feet that the screen will be from the patient." Underneath this prompt is a text input field labeled "Feet:" containing the number "20".

**Step #2:** This section features a horizontal slider at the top with a blue diamond handle. Below the slider is a white vertical rectangular box. The number "263" is positioned above the box. At the bottom of the interface, there is a text instruction: "This box should be 141.86 mm in height. Please use a ruler & the slider to set the height." A button labeled "Apply & Save" is located in the bottom left corner.

1. The calibration screen will appear automatically the first time you run the software. If needed, you can re-calibrate later by clicking "Calibrate" on the control panel.
2. Enter the viewing distance (including decimals if necessary) into the area marked "Step #1"
3. At the bottom of the window, you will see a phrase saying "This box should be xxx.xx mm in height." Drag the slider at the top until the height (top to bottom) of the white box is equal to that distance in millimeters.
4. Click "Apply & Save" and you're done!

### 3. Registering Additional Products



1. When the Acuity System is running, click on “Extras” on the control panel. This will open the Extras management window.
2. Select the product that you wish to register using the tab menu at the top of the window. In the example screenshot, this is the Mini Display.
3. Click the “Enter Key” button. A field will appear prompting you to enter your key; enter either the password or the key you received from your point of purchase, and then press the Enter or Return key on your keyboard.
4. The software will authenticate the password over the internet if necessary.
5. If your key is correct, the product in question will automatically engage, and the “Disable” button will appear. Use this if you need to turn an Extra off temporarily.
6. Done!